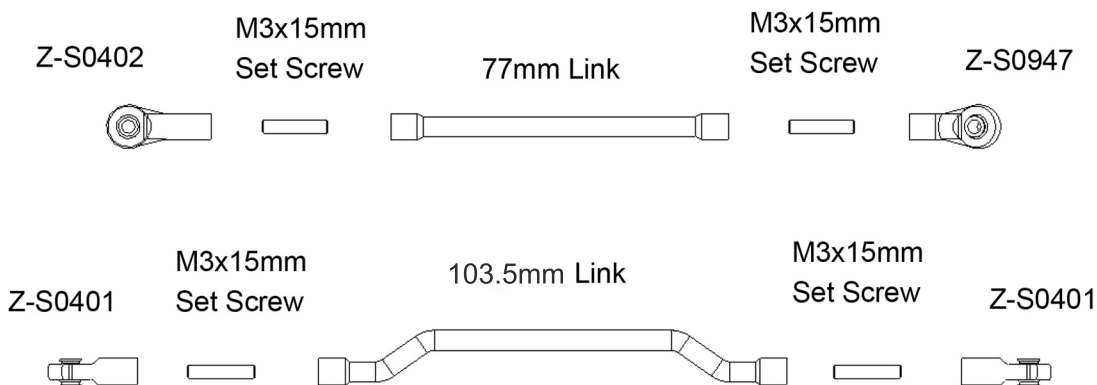


SCX10 Yota2

3 Link + Panhard Mount Manual



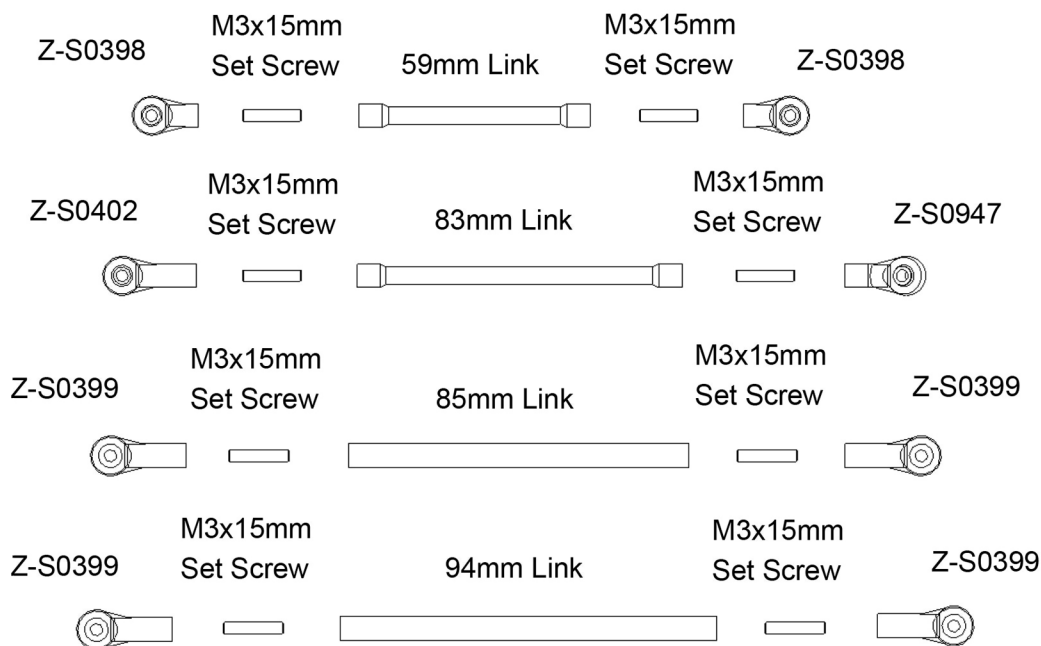
1.



(Z-S0401 and 103.5mm Link Not Included)

2.

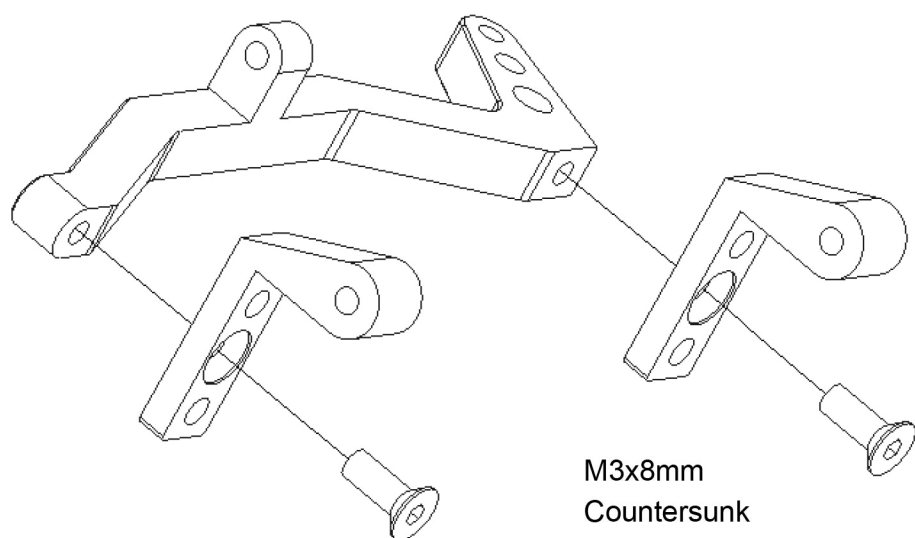
Make 2 of each.



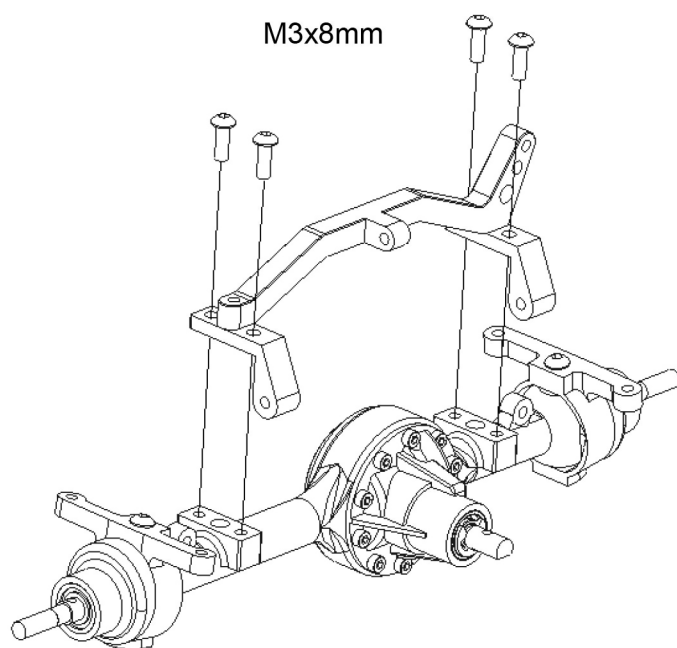
(Z-S0399 Not Included)



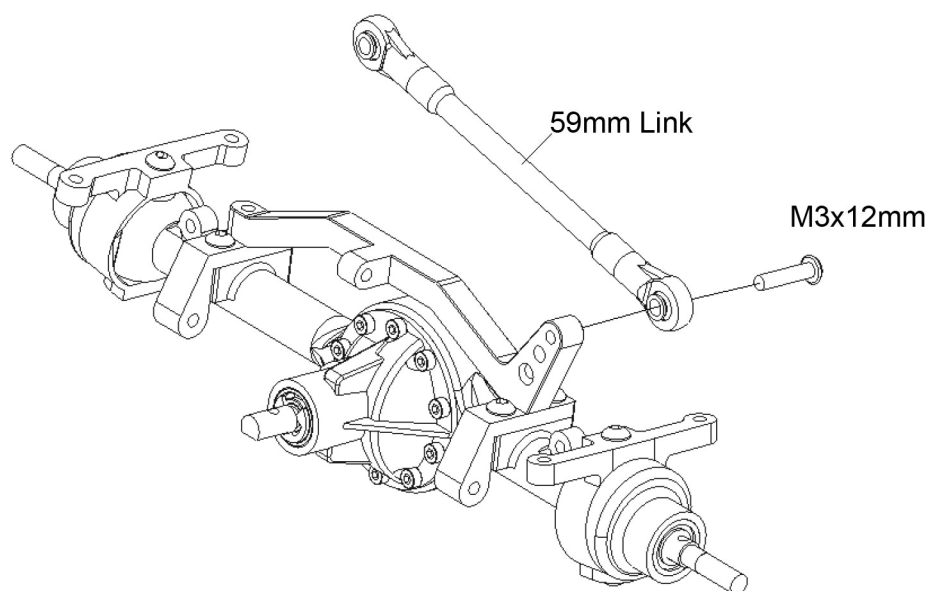
3.
Front Axle Link Mount.



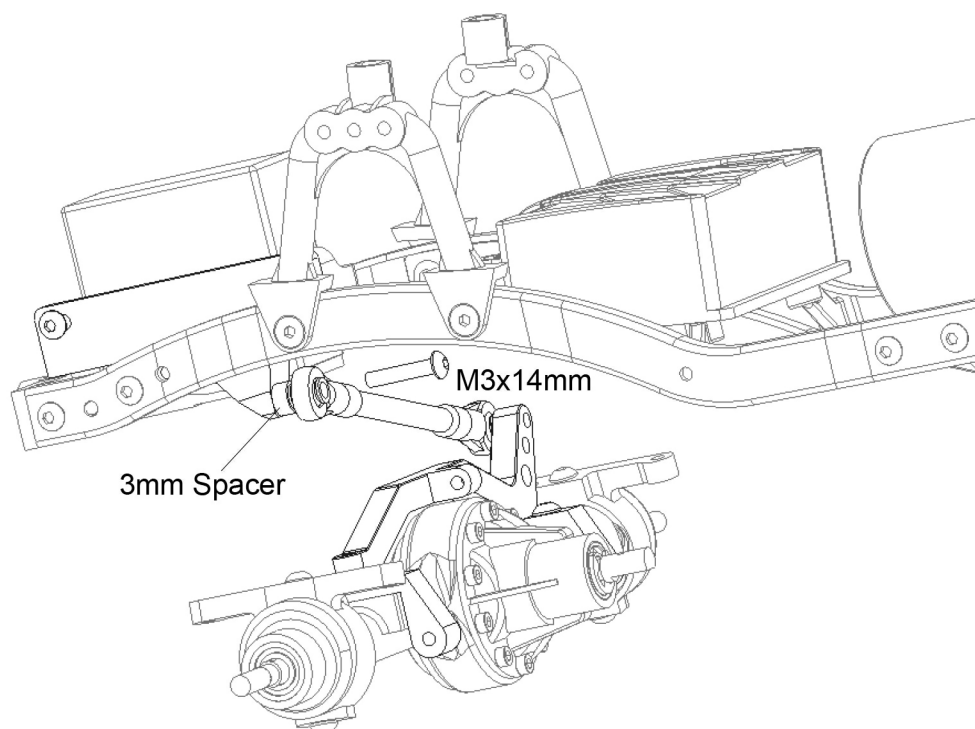
4.



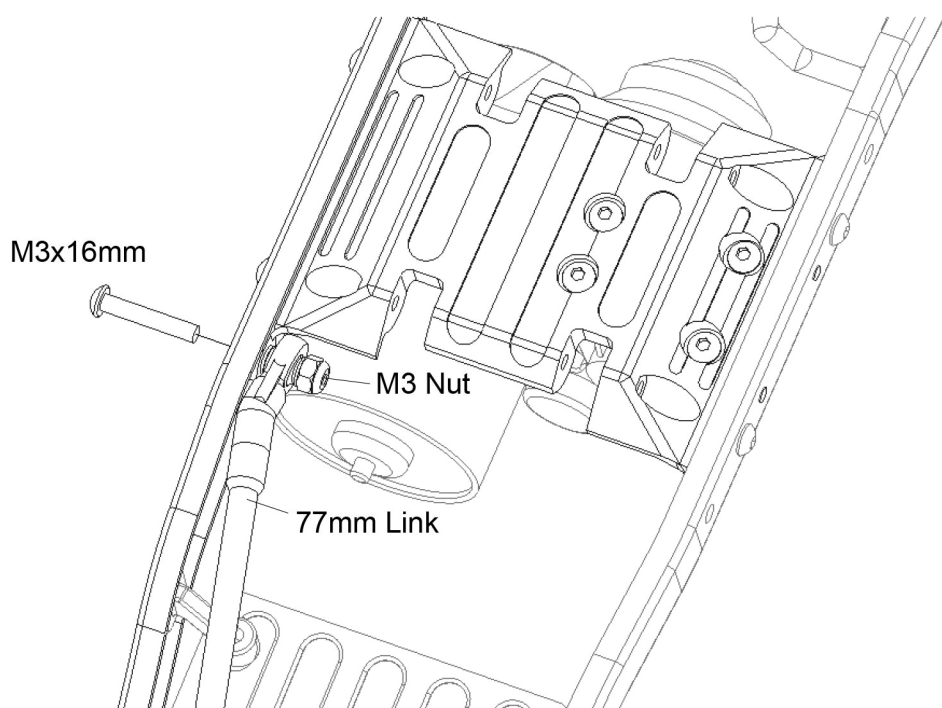
5.



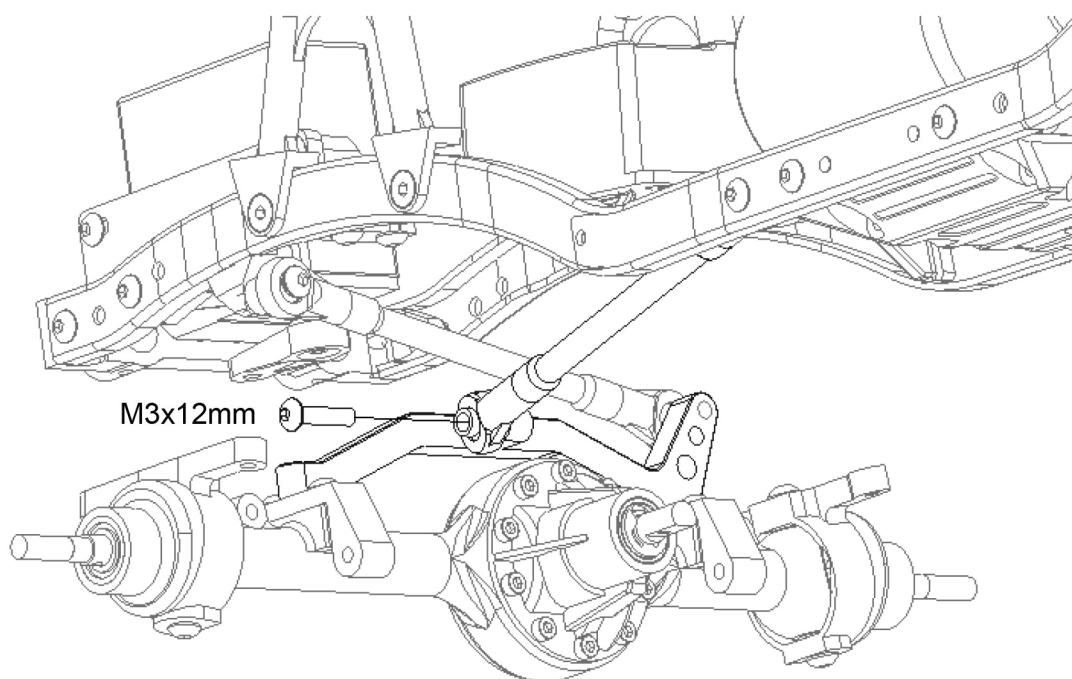
6.



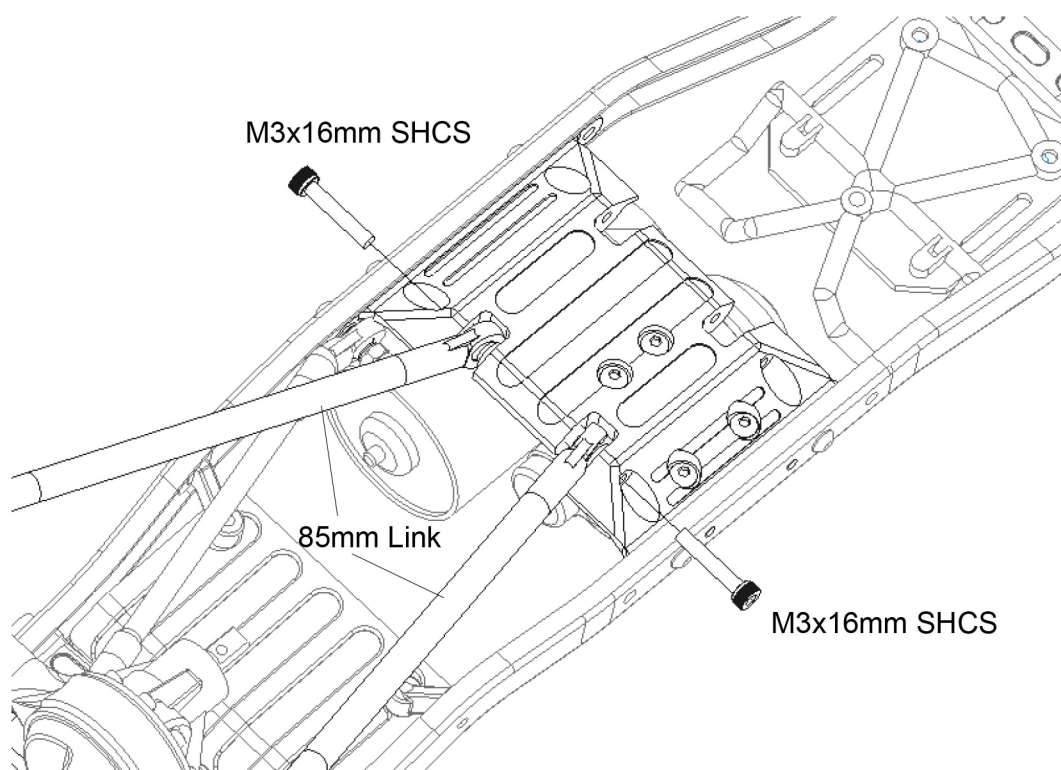
7.



8.

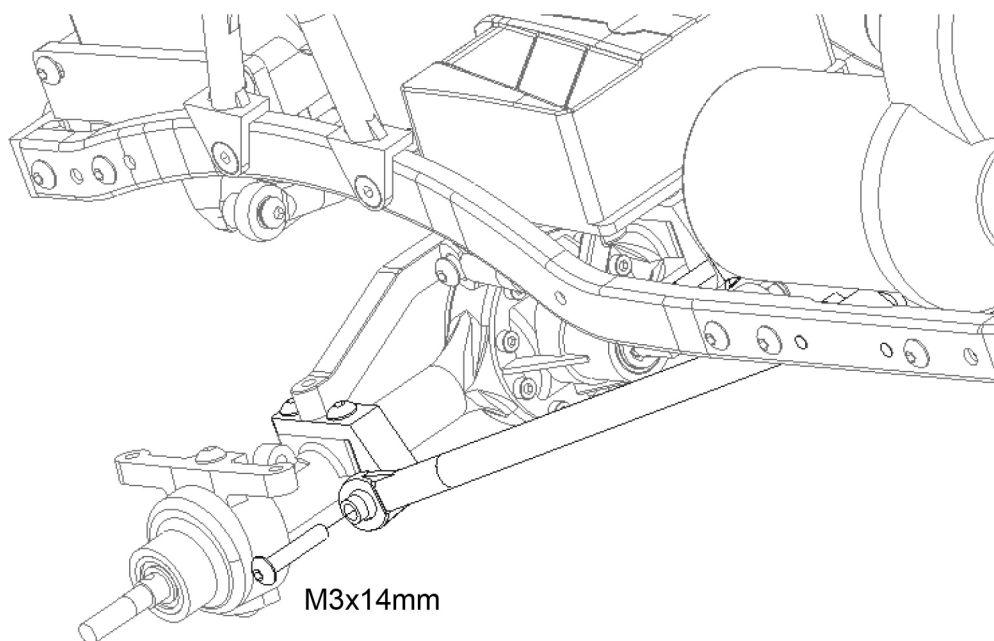


9.

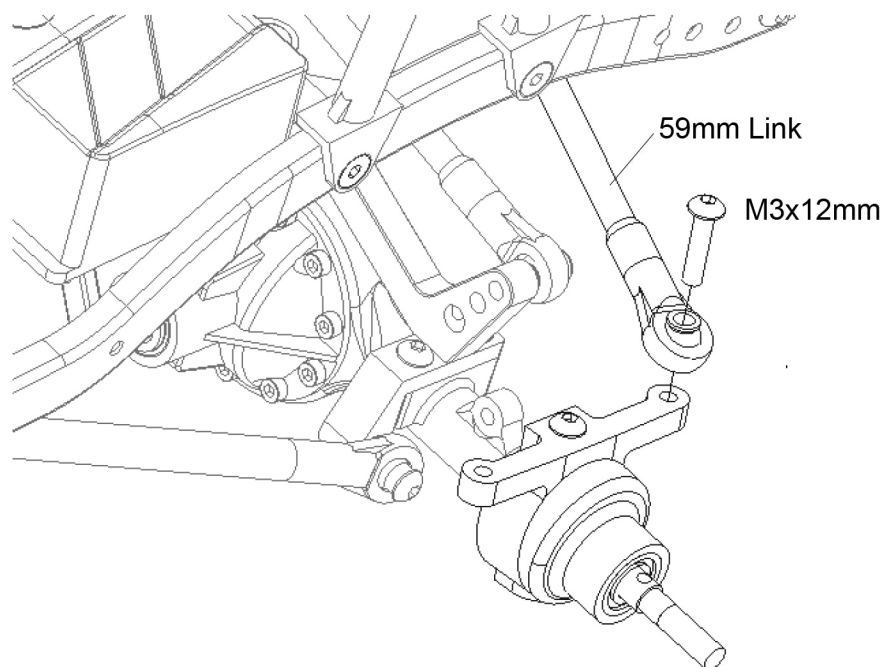


10.

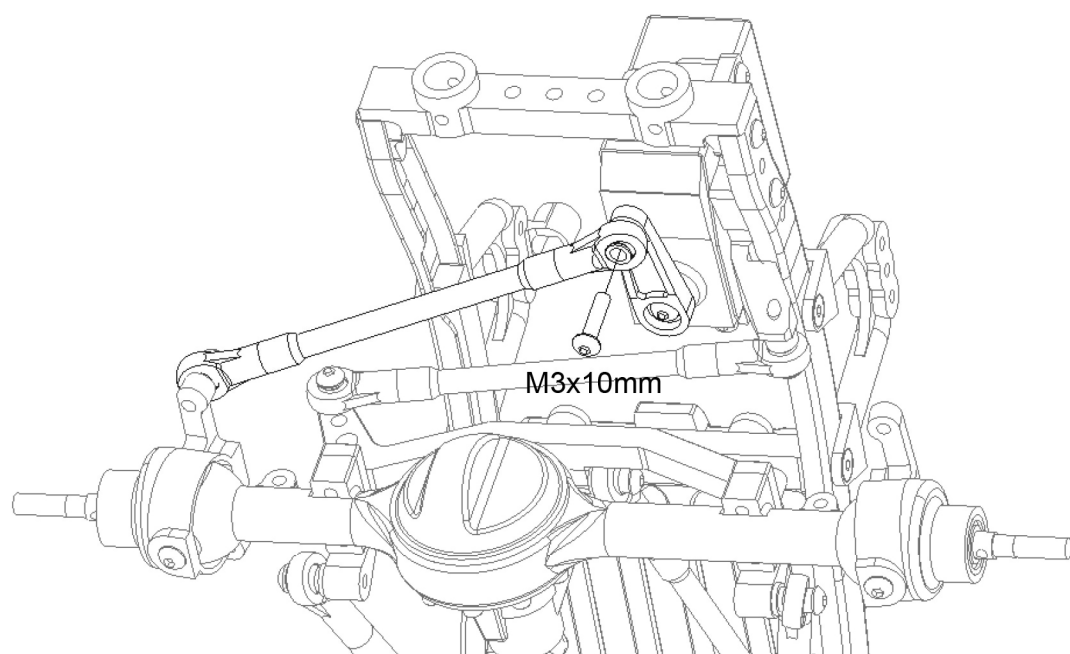
This step needs to be done on both sides.



11.

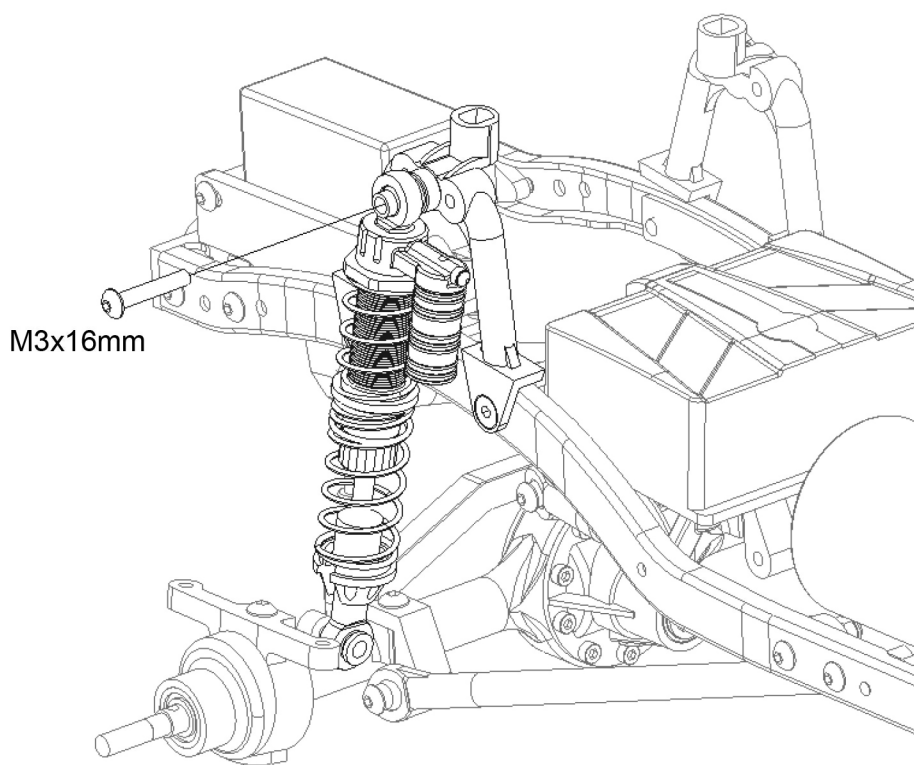


12.

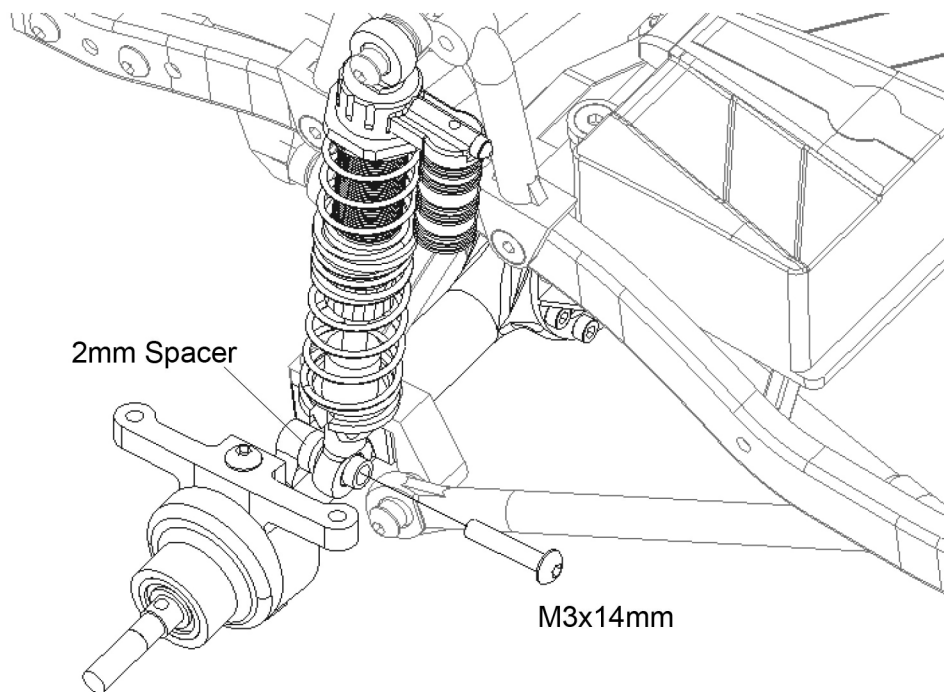


13.

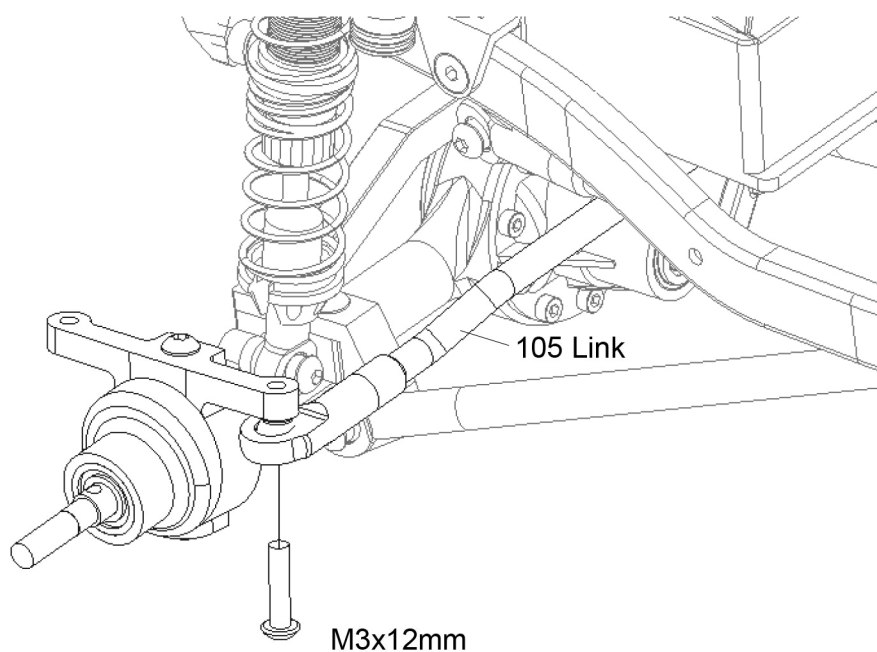
The 13-15 step needs to be done on both sides.



14.

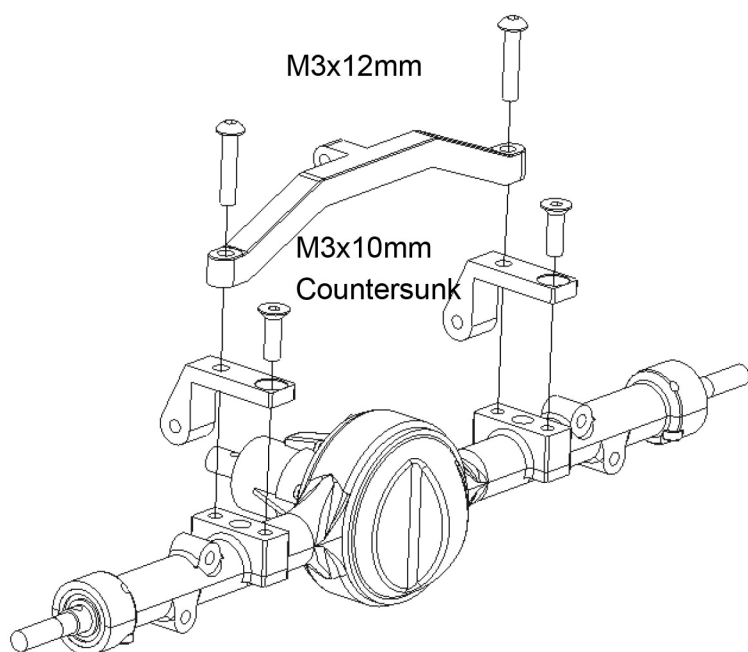


15.

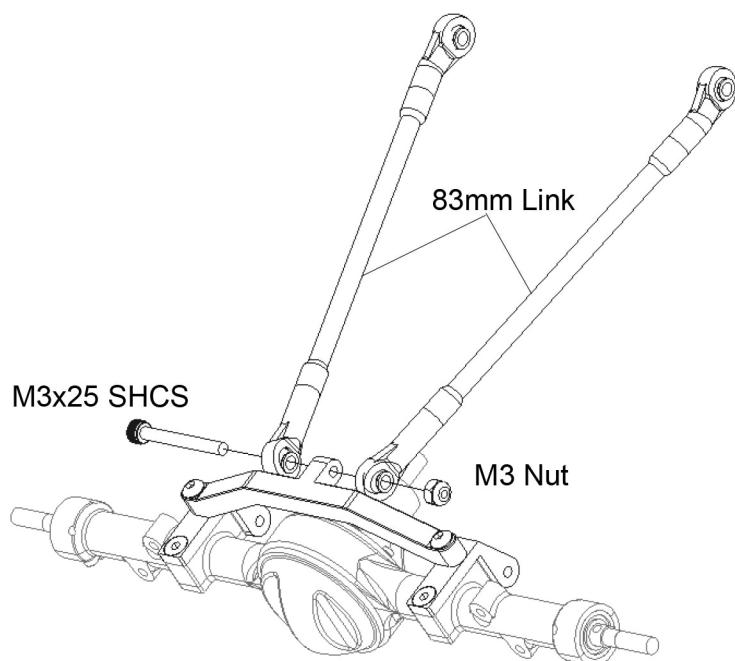


16.

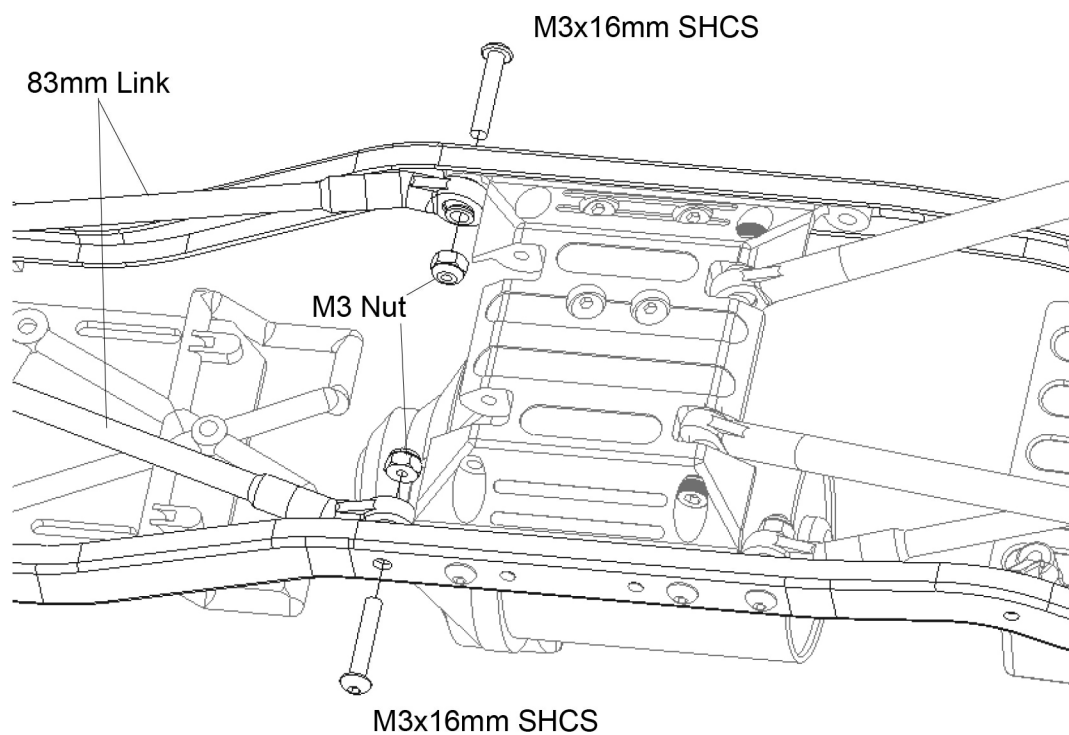
Rear Axle Link Mount.



17.

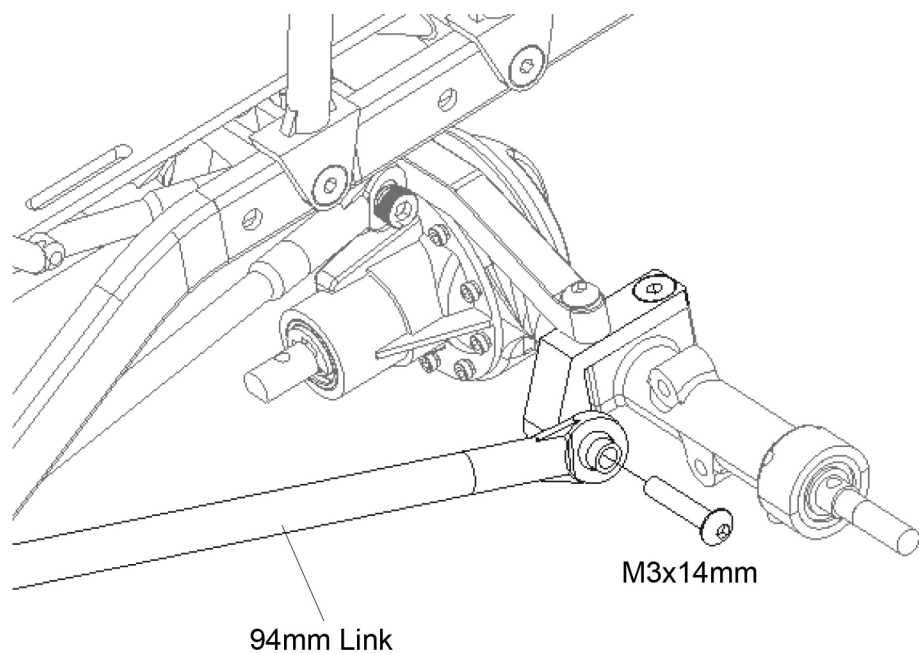


18.

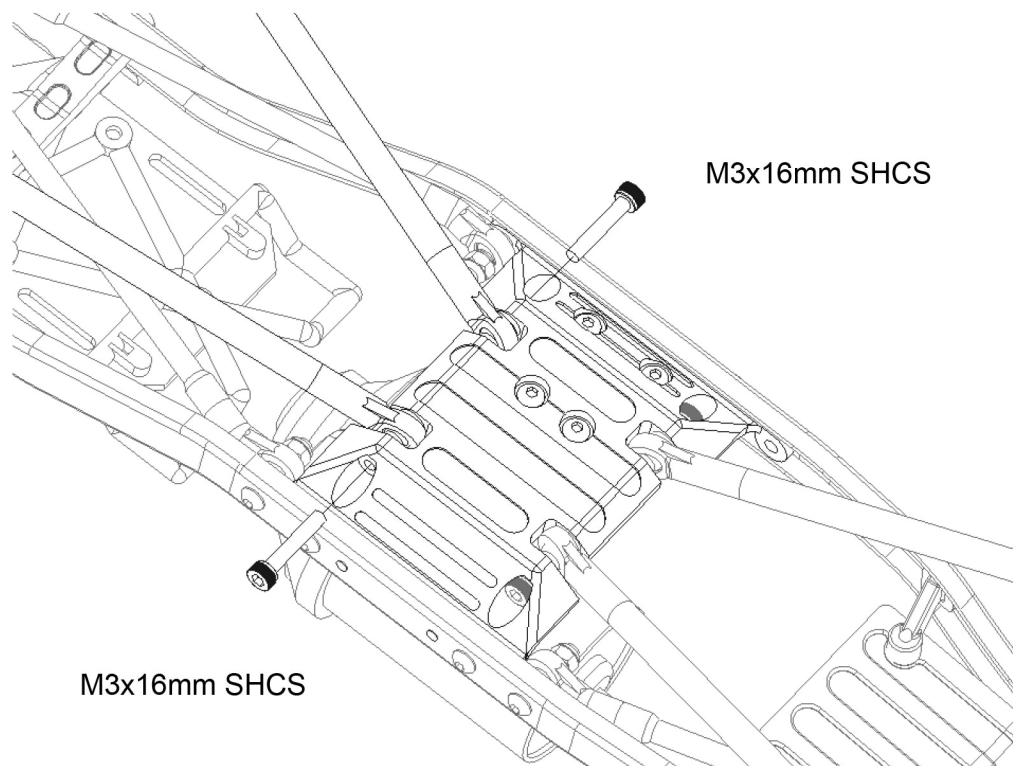


19.

This step needs to be done on both sides.

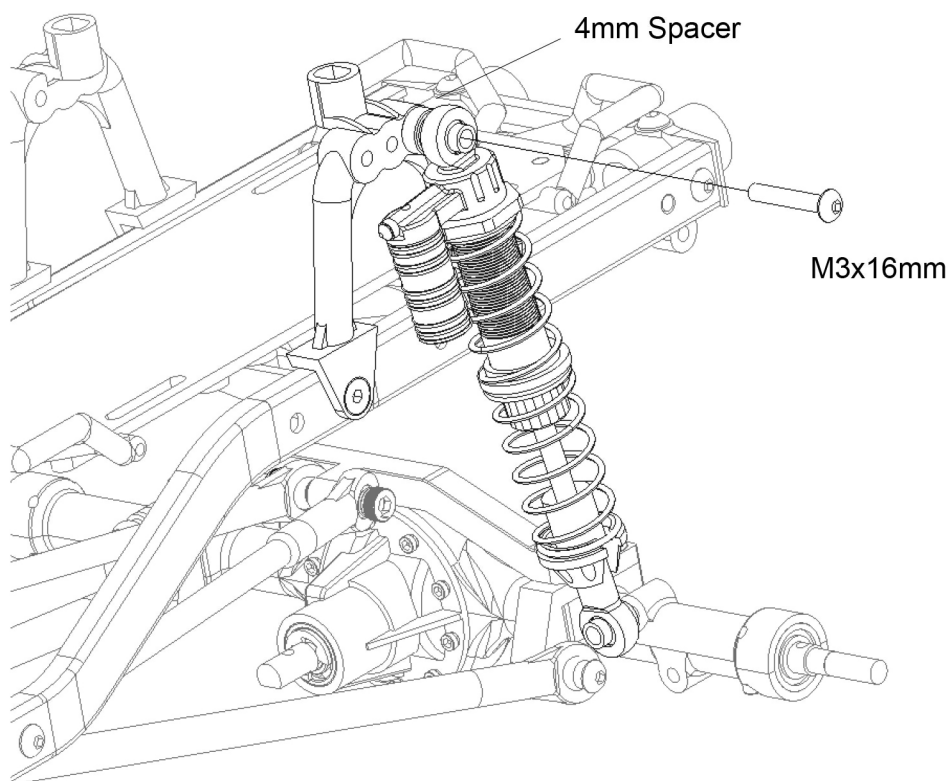


20.



21.

The 21-22 step needs to be done on both sides.



22.

